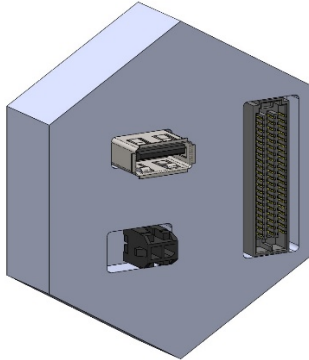


Block Diagram



Features

- Power Unit Module of the Modular Data Link Unit system
- USB Data Interface
- Wide input power range: +12V ÷ 24V

Description

AS-00115-A is the founding module of the DLU Modular system. The module takes care of the power generation of the SoM and RF modules which compose the Modular DLU. The AS-00115-A module takes care to interface the whole DLU with the external power and data sources.

Equipped with high efficiency DC/DC converter and Low Drop Out regulators AS-00115-A is able to generate ultra clean power rails for sensitive RF Modules.

USB interface enable UART data exchange with many different controller: PC, emedded controller, MCUs.

Module Specifications

Parameter	Typ.	Unit
Input Voltage	12 ÷ 24	V
Input Power	20 Typ	W
Data Input Interface	USB 2.0 TypeB	
Power Input Interface	Molex Multi-pin	
System Common Interface	SAMTEC SEAF 120pin	
Dimensions	7 x 7 x 1,5 (L x W x H)	cm